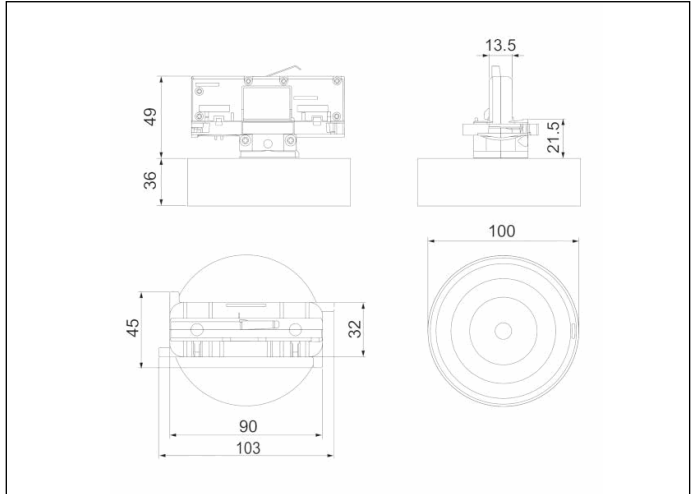


### Graphic reference



### Dimensions



**Control System:** AutoTest  
Centralized Wireless  
**Standards:** EN-60598-1,  
EN-60598-2-22, EN-62034

**Luminaire:** Self-Contained  
**Certification:** CE

### Electrical characteristics

**Supply:** 230V 50Hz<2.5W  
**Maintained mode consumption:** 2.5 W  
**Non-maintained mode consumption:** 0.9 W  
**Working temperature:** 0-40°C  
**Emergency lamp:** 1 x LED 3W  
**Emergency lumen output:** 250 lm  
**Maintained lumen output:** 150 lm  
**Battery:** 3.2V-1.5Ah LFP

**Class:** II  
**Mode:** -  
**Power factor:** - %  
**Signaling Luminaire:** -  
**LED temperature:** 4000°K  
**Duration:** 1 h  
**Remote control:** No  
**Charging time:** 12 h

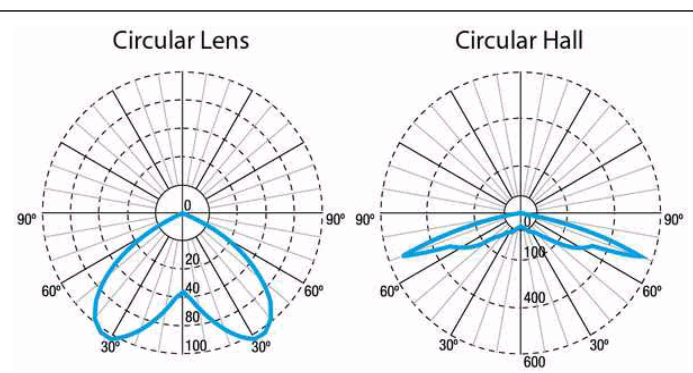
### Mechanical characteristics

**Envelope:** Polycarbonate  
**Diffuser:** Circular Lens + Hall  
**Suitable for flammable surfaces:** Yes

**ATEX Envelope:**

**IP/IK:** IP20/IK04  
**Finish:** White RAL9003  
**Weight:** 0,16KG

### Photometric curve



### Interdistance

**Installation height**

Installation height	Interdistance (Circular Lens)	Interdistance (Circular Hall)
2,0 m	8,00 m	8,00 m
2,5 m	9,21 m	9,21 m
3,0 m	10,27 m	10,27 m
3,5 m	11,26 m	11,26 m

### Installation characteristics

Installation possibilities in:

Electrical rail.

Compatible with ONETRACK UL 3 circuits

Compatible with EUROSTANDARD tracks

### Operating characteristics

The luminaire has status LEDs, which indicates:

Status of the battery charging circuit.

Battery status (duration)

Emergency status function.

Test status.

Microprocessor controlled luminaire

The luminaire can be connected to a control unit.

When the luminaire is installed without a control unit, it performs periodic and automatic tests.

Functional test every 7 days.

Duration test every 365 days.

The test result is shown in the status indicator LEDs.

Wireless communication that allows: Communication with Control unit by wireless communication with a 868Mhz frequency system.

### General Envelope data