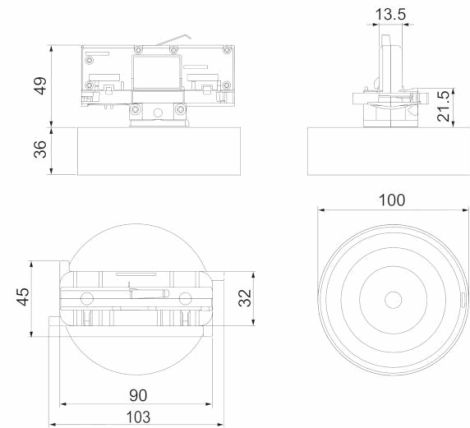


Graphic reference



Dimensions



Control System: AutoTest

Luminaire: Self-Contained

Standards: EN-60598-1,
EN-60598-2-22, EN-62034

Certification: CE

Electrical characteristics

Supply: 230V 50Hz<2.5W
Maintained mode consumption: 2,5 W
Non-maintained mode consumption: 0,9 W
Working temperature: 0-40°C
Emergency lamp: 1 x LED 3W
Emergency lumen output: 250 lm
Maintained lumen output: 150 lm
Battery: 3.2V-1.5Ah LFP

Class: II
Mode: -
Power factor: - %
Signaling Luminaire: -
LED temperature: 4000°K
Duration: 1 h
Remote control: No
Charging time: 12 h

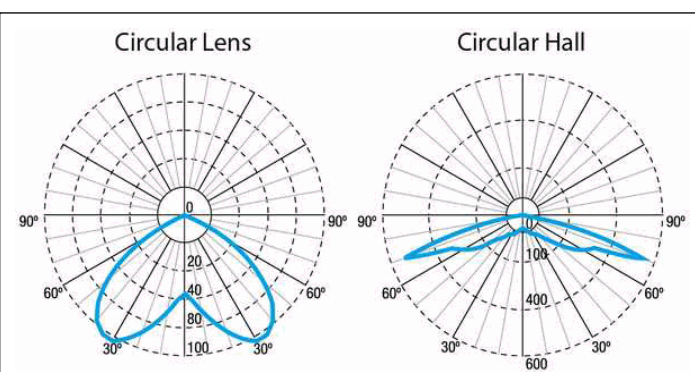
Mechanical characteristics

Housing: Polycarbonate
Diffuser: Circular Lens + Hall
Suitable for flammable surfaces: Yes

ATEX Envelope:

IP/IK: IP20/IK04
Finish: White RAL9003
Weight: 0,24KG

Photometric curve



Interdistance

Installation height

| | | |
|-------|---------|---------|
| 2,0 m | 8,00 m | 8,00 m |
| 2,5 m | 9,21 m | 9,21 m |
| 3,0 m | 10,27 m | 10,27 m |
| 3,5 m | 11,26 m | 11,26 m |

Installation characteristics

Installation possibilities in:

Electrical rail.

Compatible with ONETRACK UL 3 circuits

Compatible with EUROSTANDARD tracks

Operating characteristics

Charge in 24 h to obtain the nominal duration of the luminaire.

The luminaire has status LEDs, which indicates:

Status of the battery charging circuit.

Battery status (duration)

Emergency status function.

Test status.

Microprocessor controlled luminaire that performs periodic and automatic tests.

Functional test every 7 days.

Duration test every 365 days.

The test result is shown in the status indicator LEDs.

The luminaire has a built-in button, which allows:

Simulation test of supply failure.

Remote control input that allows:

Standby without power supply.

Resumed in emergency status without power supply.

Switched on in emergency status (more than 24 h of charge)

Manual and remote duration test. (more than 24 hours of charge).

Date and time programming of the tests.

General Envelope data