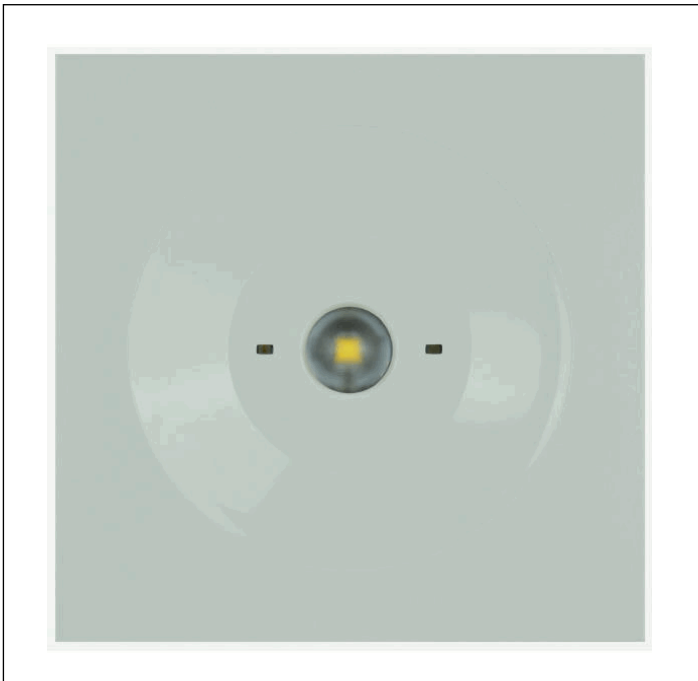
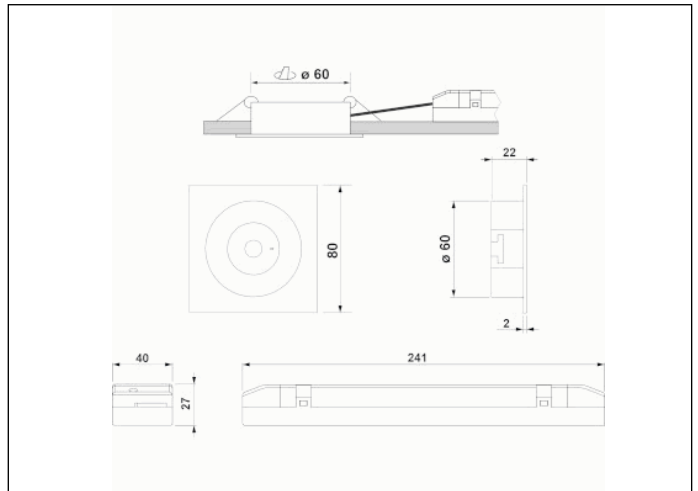


Graphic reference



Dimensions



Control System: AutoTest

Luminaire: Self-Contained

Standards: EN-60598-1,
EN-60598-2-22, EN-62034

Certification: CE

Electrical characteristics

Supply: 230V 50Hz<1.0W

Maintained mode consumption: - W

Non-maintained mode consumption: 1,0 W

Working temperature: 0-40°C

Emergency lamp: 1XLEDS 3W

Emergency lumen output: 165 lm

Maintained lumen output: - lm

Battery: 3.2V-1.8Ah LFP

Class: II

Mode: NM

Power factor: - %

Signaling Luminaire: -

LED temperature: 4000°K

Duration: 3 h

Remote control: Yes

Charging time: 12 h

Mechanical characteristics

Housing: Polycarbonate

Diffuser: Antipanic Lens

Suitable for flammable surfaces: Yes

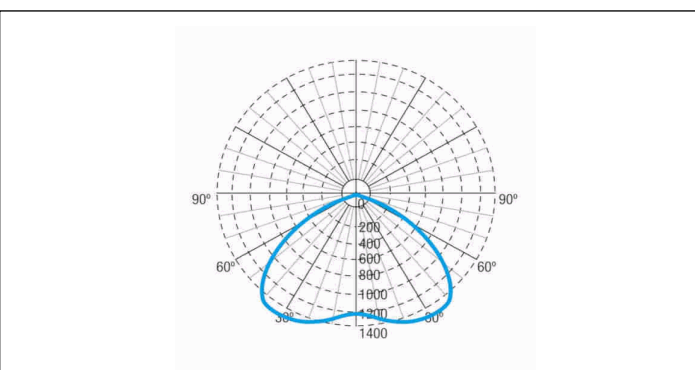
ATEX Envelope:

IP/IK: IP42/IK04

Finish: White RAL9003

Weight: 0,20KG

Photometric curve



Interdistance

Installation height



2,0 m 8,44 m 8,44 m

2,5 m 9,30 m 9,30 m

3,0 m 9,95 m 9,95 m

3,5 m 10,38 m 10,38 m

Installation characteristics

Maintained luminaires use 3 mains supply inputs (L, L1, N) to enable / disable the maintained mode.
Luminaires made up of a spotlight + electrical equipment with batteries (autonomous luminaires), or without batteries (centralized luminaires)
Possibility of installation in:
 Recessed ceiling.
Ceiling fixing by 2 springs.

Operating characteristics

The luminaire has status LEDs, which indicates:
 Status of the battery charging circuit.
 Battery status (duration)
 Emergency status function.
 Test status.

Microprocessor controlled luminaire that performs periodic and automatic tests.
 Functional test every 7 days.
 Duration test every 365 days.

The test result is shown in the status indicator LEDs.

Remote control input that allows:
 Put on Standby without power supply.
 Restart in emergency status without power supply.
 Switch on in emergency status (more than 24 h of charge)
 Manual and remote duration test. (more than 24 hours of charge).
 Date and time programming of the tests.
 Reset of the luminaire status.

General Envelope data

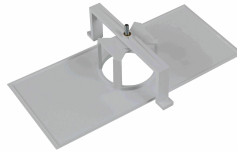
Accessories

AMU8003



ACC. FRAME REC. SPAZIO WHITE
UNIVERSAL BIG HOLE

AMU8002



ACC. FRAME REC. SPAZIO WHITE
UNIVERSAL

ABX1741



ACC. PANEL REC. SPAZIO SERIG.
RIGHT/LEFT ARROW

ABX1841



ACC. PANEL REC. SPAZIO SERIG. UP
ARROW

ABX1941



ACC. PANEL REC. SPAZIO SERIG.
DOWN ARROW

ABX5441



ACC. PANEL REC. SPAZIO SERIG.
LEFT ARROW SINGLE-SIDED

ABX5841



ACC. PANEL REC. SPAZIO SERIG. UP
ARROW SINGLE-SIDED

ABX5541



ACC. PANEL REC. SPAZIO SERIG.
RIGHT ARROW SINGLE-SIDED

ABX5741



ACC. PANEL REC. SPAZIO WHITE
SERIG. DOWN ARROW SINGLE-SIDED