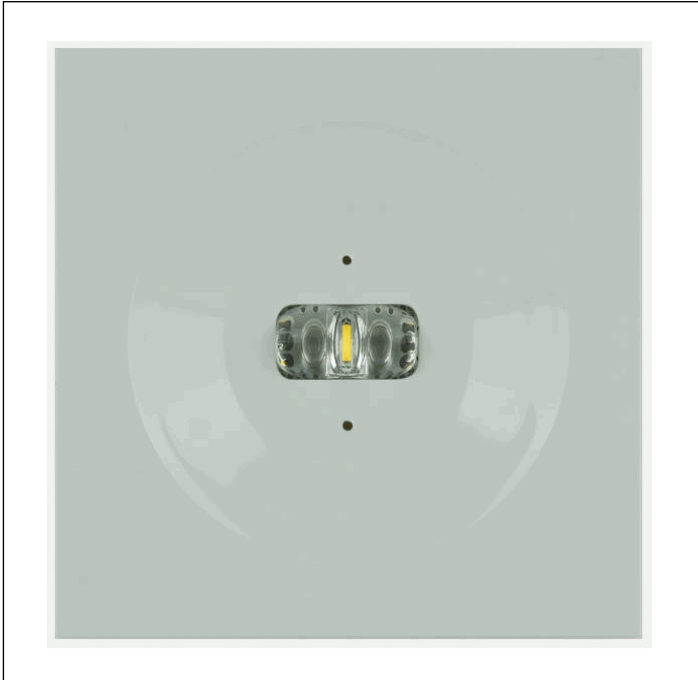
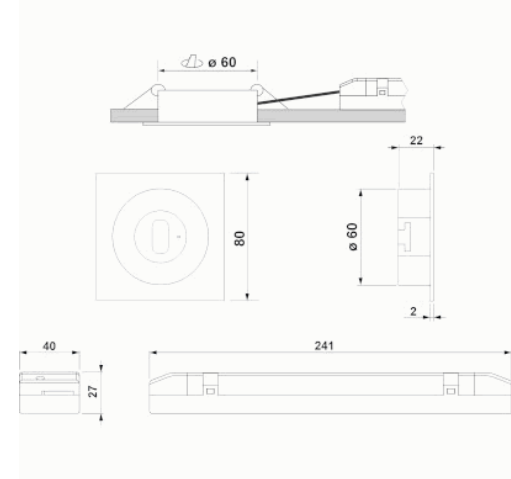


### Graphic reference



### Dimensions



**Control System:** DALI2

**Luminaire:** Self-Contained

**Standards:** EN-60598-1,  
EN-60598-2-22, EN-62034, EN  
61347-2-7, EN 61347-2-13, EN  
62386

**Certification:** CE, ENEC,  
DALI2



### Electrical characteristics

**Supply:** 230V 50Hz<2.8W

**Maintained mode consumption:** 2,8 W

**Non-maintained mode consumption:** 0,9 W

**Working temperature:** 0-40°C

**Emergency lamp:** 1XLEDS 3W

**Emergency lumen output:** 280 lm

**Maintained lumen output:** 170 lm

**Battery:** 3.2V-1.5Ah LFP

**Class:** II

**Mode:** M/NM

**Power factor:** - %

**Signaling Luminaire:** -

**LED temperature:** 4000°K

**Duration:** 1 h

**Remote control:** No

**Charging time:** 12 h

### Mechanical characteristics

**Housing:** Polycarbonate

**Diffuser:** Escape Lens

**Suitable for flammable surfaces:** Yes

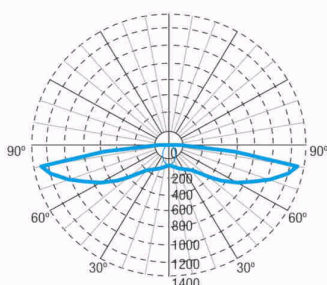
**ATEX Envelope:**

**IP/IK:** IP42/IK04

**Finish:** White RAL9003

**Weight:** 0,21KG

### Photometric curve



### Interdistance

**Installation height**



2,0 m                      6,77 m                      18,74 m

2,5 m                      7,32 m                      21,74 m

3,0 m                      7,60 m                      24,43 m

3,5 m                      7,78 m                      26,88 m

### Installation characteristics

Maintained luminaires use 3 mains supply inputs (L, L1, N) to enable / disable the maintained mode.  
Luminaires made up of a spotlight + electrical equipment with batteries (autonomous luminaires), or without batteries (centralized luminaires)  
Possibility of installation in:  
    Recessed ceiling.  
Ceiling fixing by 2 springs.

### Operating characteristics

Bus available for DALI2 communication.  
The luminaire has a status LED, which indicates:  
    Green LED: OK  
    Yellow LED flashing: Battery charging or battery connection failure.  
    LED off: Emergency operation failure or mains failure or defective LED or defective unit.

### General Envelope data

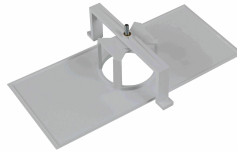
### Accessories

**AMU8003**



ACC. FRAME REC. SPAZIO WHITE  
UNIVERSAL BIG HOLE

**AMU8002**



ACC. FRAME REC. SPAZIO WHITE  
UNIVERSAL

**ABX1741**



ACC. PANEL REC. SPAZIO SERIG.  
RIGHT/LEFT ARROW

**ABX1841**



ACC. PANEL REC. SPAZIO SERIG.  
UP ARROW

**ABX1941**



ACC. PANEL REC. SPAZIO SERIG.  
DOWN ARROW

**ABX5441**



ACC. PANEL REC. SPAZIO SERIG.  
LEFT ARROW SINGLE-SIDED

**ABX5541**



ACC. PANEL REC. SPAZIO SERIG.  
RIGHT ARROW SINGLE-SIDED

**ABX5741**



ACC. PANEL REC. SPAZIO WHITE  
SERIG. DOWN ARROW SINGLE-SIDED

**ABX5841**



ACC. PANEL REC. SPAZIO SERIG.  
UP ARROW SINGLE-SIDED