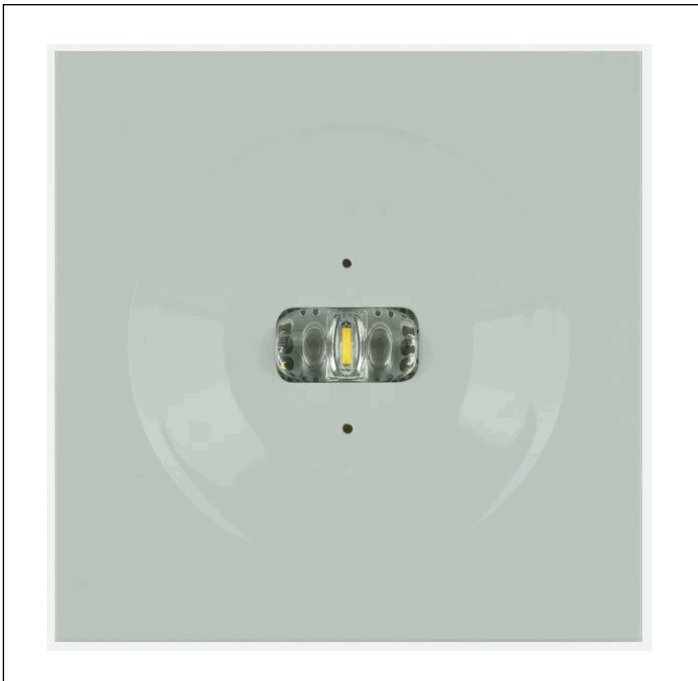
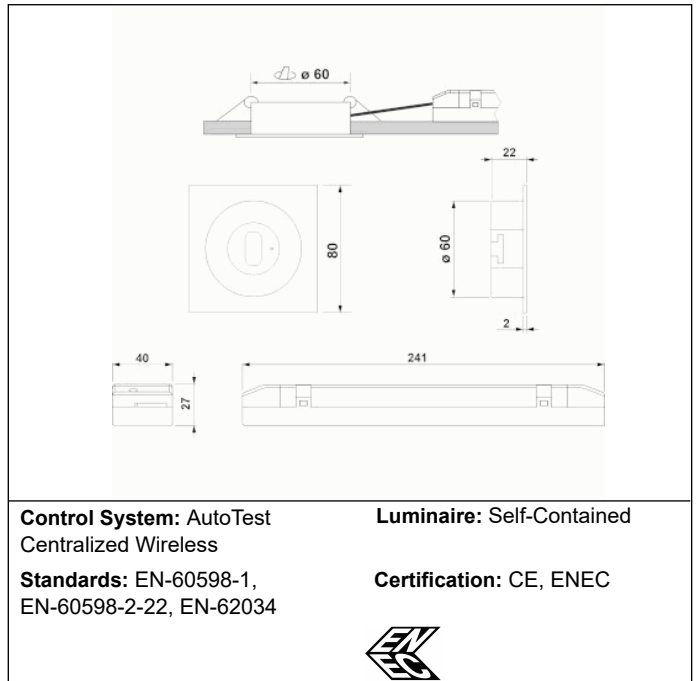


Graphic reference



Dimensions



Electrical characteristics

Supply: 230V 50Hz<2.8W
Maintained mode consumption: 2.8 W
Non-maintained mode consumption: 0.9 W
Working temperature: 0-40°C
Emergency lamp: 1 x LED 3W
Emergency lumen output: 250 lm
Maintained lumen output: 150 lm
Battery: 3.2V-1.5Ah LFP

Class: II
Mode: M/NM
Power factor: - %
Signaling Luminaire: -
LED temperature: 4000°K
Duration: 1 h
Remote control: No
Charging time: 12 h

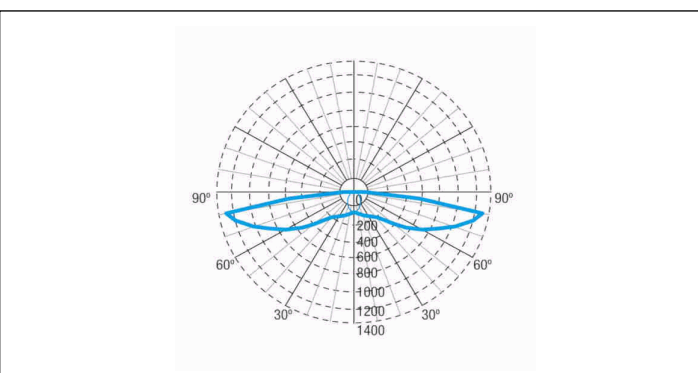
Mechanical characteristics

Envelope: Polycarbonate
Diffuser: Escape Lens
Suitable for flammable surfaces: Yes

ATEX Envelope:

IP/IK: IP42/IK04
Finish: White RAL9003
Weight: 0,60KG

Photometric curve



Interdistance

Installation height	Interdistance	Interdistance
2,0 m	6,77 m	18,74 m
2,5 m	7,32 m	21,74 m
3,0 m	7,60 m	24,43 m
3,5 m	7,78 m	26,88 m

Installation characteristics

Maintained luminaires use 3 mains supply inputs (L, L1, N) to enable / disable the maintained mode.
Luminaires made up of a spotlight + electrical equipment with batteries (autonomous luminaires), or without batteries (centralized luminaires)
Possibility of installation in:
 Recessed ceiling.
Ceiling fixing by 2 springs.

Operating characteristics

The luminaire has status LEDs, which indicates:
 Status of the battery charging circuit.
 Battery status (duration)
 Emergency status function.
 Test status.
Microprocessor controlled luminaire
The luminaire can be connected to a control unit.
When the luminaire is installed without a control unit, it performs periodic and automatic tests.
 Functional test every 7 days.
 Duration test every 365 days.
The test result is shown in the status indicator LEDs.
Wireless communication that allows: Communication with Control unit by wireless communication with a 868Mhz frequency system.

General Envelope data

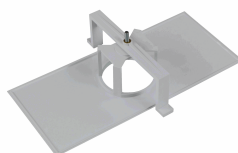
Accessories

ABX0041



KIT SPAZIO BUILT-IN FLAG WITHOUT
SERIGRAPHING

AMU8002



ACC. FRAME REC. SPAZIO WHITE
UNIVERSAL