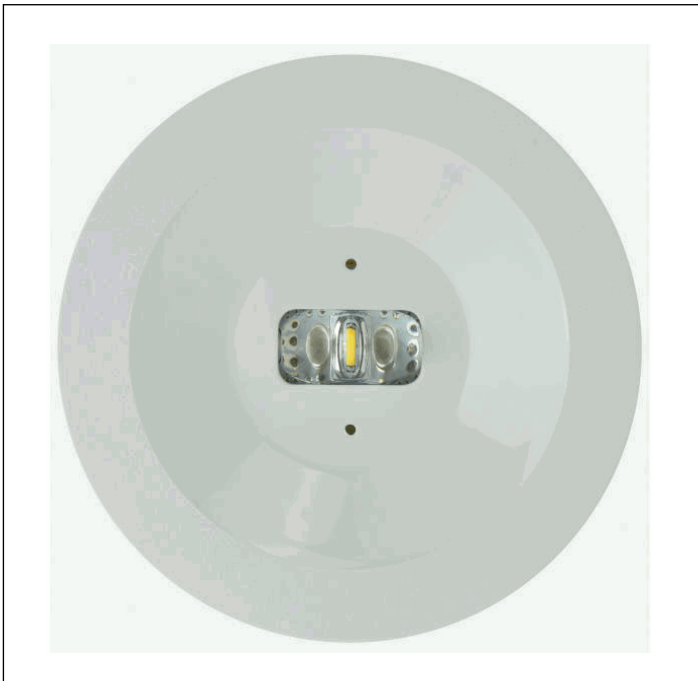
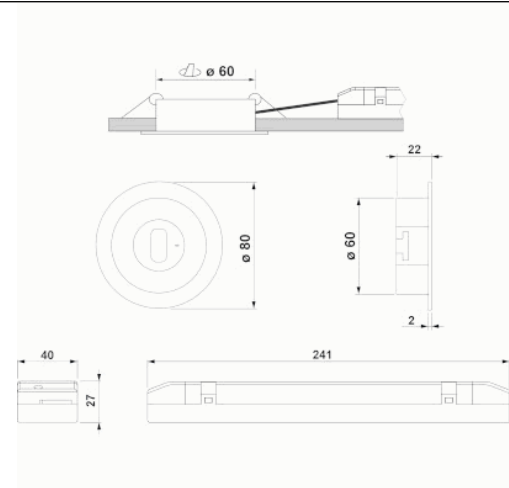


### Graphic reference



### Dimensions



**Control System:** AutoTest

**Luminaire:** Self-Contained

**Standards:** EN-60598-1,  
EN-60598-2-22, EN-62034

**Certification:** CE, ENEC



### Electrical characteristics

**Supply:** 230V 50Hz<1.0W

**Maintained mode consumption:** - W

**Non-maintained mode consumption:** 1,0 W

**Working temperature:** 0-40°C

**Emergency lamp:** 1XLEDS 3W

**Emergency lumen output:** 280 lm

**Maintained lumen output:** - lm

**Battery:** 3.2V-1.5Ah LFP

**Class:** II

**Mode:** NM

**Power factor:** - %

**Signaling Luminaire:** -

**LED temperature:** 4000°K

**Duration:** 1 h

**Remote control:** Yes

**Charging time:** 12 h

### Mechanical characteristics

**Housing:** Polycarbonate

**Diffuser:** Escape Lens

**Suitable for flammable surfaces:** Yes

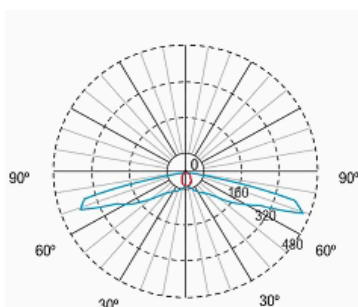
**ATEX Envelope:**

**IP/IK:** IP42/IK04

**Finish:** White RAL9003

**Weight:** 0,20KG

### Photometric curve



### Interdistance

**Installation height**



2,0 m	6,77 m	18,74 m
2,5 m	7,32 m	21,74 m
3,0 m	7,60 m	24,43 m
3,5 m	7,78 m	26,88 m

### Installation characteristics

Maintained luminaires use 3 mains supply inputs (L, L1, N) to enable / disable the maintained mode.  
Luminaires made up of a spotlight + electrical equipment with batteries (autonomous luminaires), or without batteries (centralized luminaires)  
Possibility of installation in:  
    Recessed ceiling.  
Ceiling fixing by 2 springs.

### Operating characteristics

The luminaire has status LEDs, which indicates:  
    Status of the battery charging circuit.  
    Battery status (duration)  
    Emergency status function.  
    Test status.

Microprocessor controlled luminaire that performs periodic and automatic tests.  
    Functional test every 7 days.  
    Duration test every 365 days.

The test result is shown in the status indicator LEDs.

Remote control input that allows:  
    Put on Standby without power supply.  
    Restart in emergency status without power supply.  
    Switch on in emergency status (more than 24 h of charge)  
    Manual and remote duration test. (more than 24 hours of charge).  
    Date and time programming of the tests.  
    Reset of the luminaire status.

### General Envelope data

### Accessories

**ABX1741**



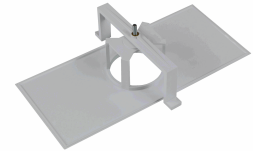
ACC. PANEL REC. SPAZIO SERIG.  
RIGHT/LEFT ARROW

**ABX1841**



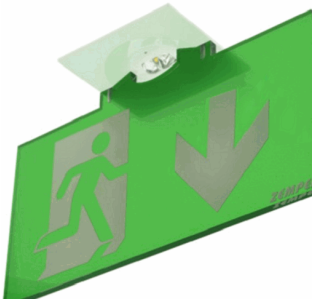
ACC. PANEL REC. SPAZIO SERIG. UP  
ARROW

**AMU8002**



ACC. FRAME REC. SPAZIO WHITE  
UNIVERSAL

**ABX1941**



ACC. PANEL REC. SPAZIO SERIG.  
DOWN ARROW

**AMU8003**



ACC. FRAME REC. SPAZIO WHITE  
UNIVERSAL BIG HOLE

**ABX5441**



ACC. PANEL REC. SPAZIO SERIG.  
LEFT ARROW SINGLE-SIDED

**ABX5541**



ACC. PANEL REC. SPAZIO SERIG.  
RIGHT ARROW SINGLE-SIDED

**ABX5741**



ACC. PANEL REC. SPAZIO WHITE  
SERIG. DOWN ARROW SINGLE-SIDED

**ABX5841**



ACC. PANEL REC. SPAZIO SERIG. UP  
ARROW SINGLE-SIDED