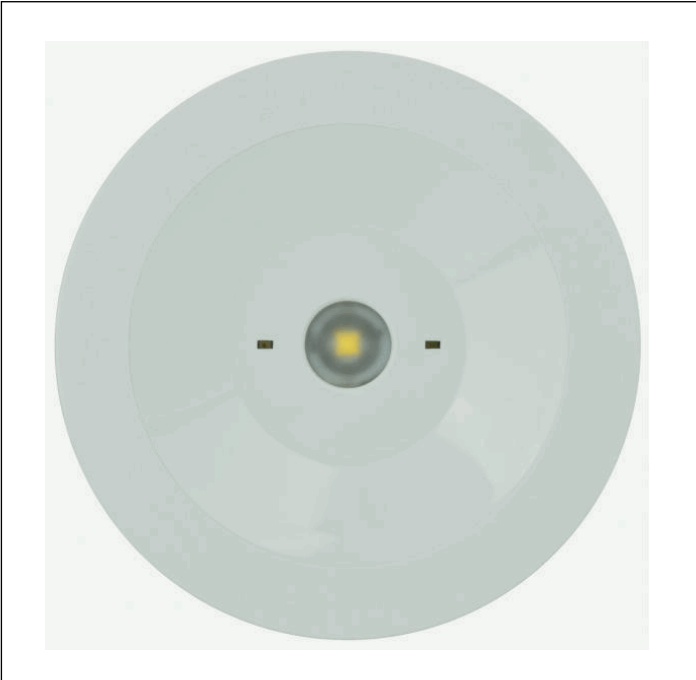
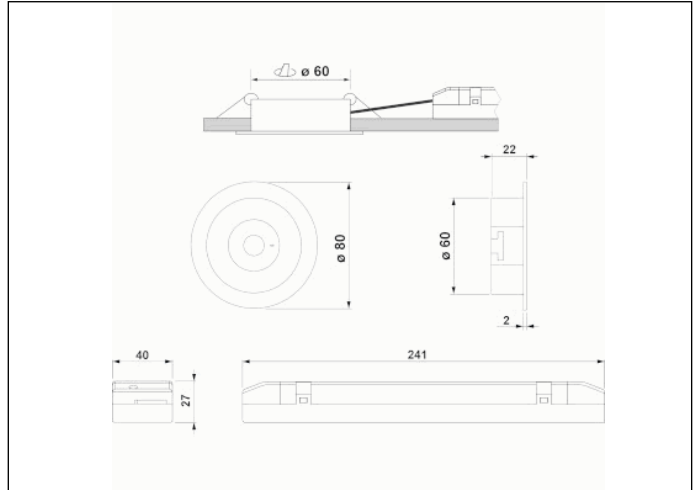


### Graphic reference



### Dimensions



**Control System:** SmartZ

**Luminaire:** Self-Contained

**Standards:** EN-60598-1,  
EN-60598-2-22, EN-62034,  
ETSI EN 303 446-1 V1.2.1

**Certification:** CE

### Electrical characteristics

**Supply:** 230V 50Hz<2.5W

**Maintained mode consumption:** 2,5 W

**Non-maintained mode consumption:** 0,9 W

**Working temperature:** 0-40°C

**Emergency lamp:** 1 x LED 3W

**Emergency lumen output:** 165 lm

**Maintained lumen output:** 100 lm

**Battery:** 3.2V-1.8Ah LFP

**Class:** II

**Mode:** M/NM

**Power factor:** - %

**Signaling Luminaire:** -

**LED temperature:** 4000°K

**Duration:** 3 h

**Remote control:** No

**Charging time:** 12 h

### Mechanical characteristics

**Housing:** Polycarbonate

**Diffuser:** Antipanic Lens

**Suitable for flammable surfaces:** Yes

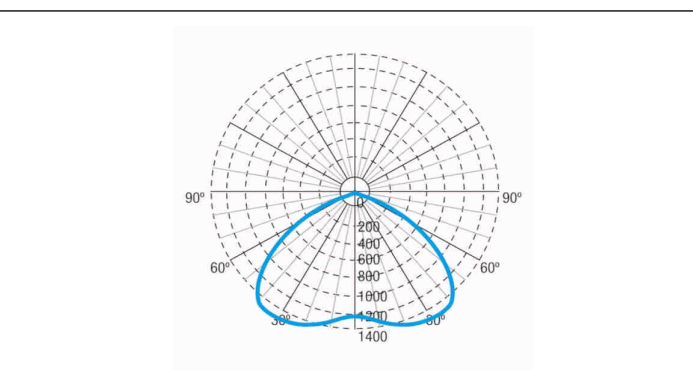
**ATEX Envelope:**

**IP/IK:** IP42/IK04

**Finish:** White RAL9003

**Weight:** 0,22KG

### Photometric curve



### Interdistance

**Installation height**



2,0 m	8,44 m	8,44 m
2,5 m	9,30 m	9,30 m
3,0 m	9,95 m	9,95 m
3,5 m	10,38 m	10,38 m

### Installation characteristics

Maintained luminaires use 3 mains supply inputs (L, L1, N) to enable / disable the maintained mode.  
Luminaires made up of a spotlight + electrical equipment with batteries (autonomous luminaires), or without batteries (centralized luminaires)  
Possibility of installation in:  
    Recessed ceiling.  
Ceiling fixing by 2 springs.

### Operating characteristics

The luminaire has status LEDs, which indicates:  
    Status of the battery charging circuit.  
    Battery status (duration)  
    Emergency status function.  
    Test status.  
Microprocessor controlled luminaire  
The luminaire can be connected to a control unit.  
When the luminaire is installed without a control unit, it performs periodic and automatic tests.  
    Functional test every 7 days.  
    Duration test every 365 days.  
The test result is shown in the status indicator LEDs.  
Wireless communication that allows: Communication with Control unit by wireless communication with a 2.4Ghz frequency system.

### General Envelope data

### Accessories

**ABX1741**



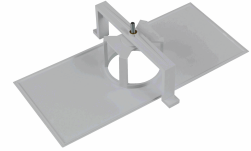
ACC. PANEL REC. SPAZIO WHITE  
SERIG. RIGHT/LEFT ARROW

**ABX1841**



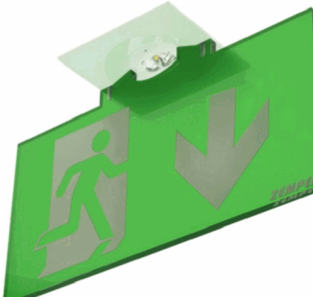
ACC. PANEL REC. SPAZIO WHITE  
SERIG. UP ARROW

**AMU8002**



ACC. FRAME REC. SPAZIO WHITE  
UNIVERSAL

**ABX1941**



ACC. PANEL REC. SPAZIO WHITE  
SERIG. DOWN ARROW