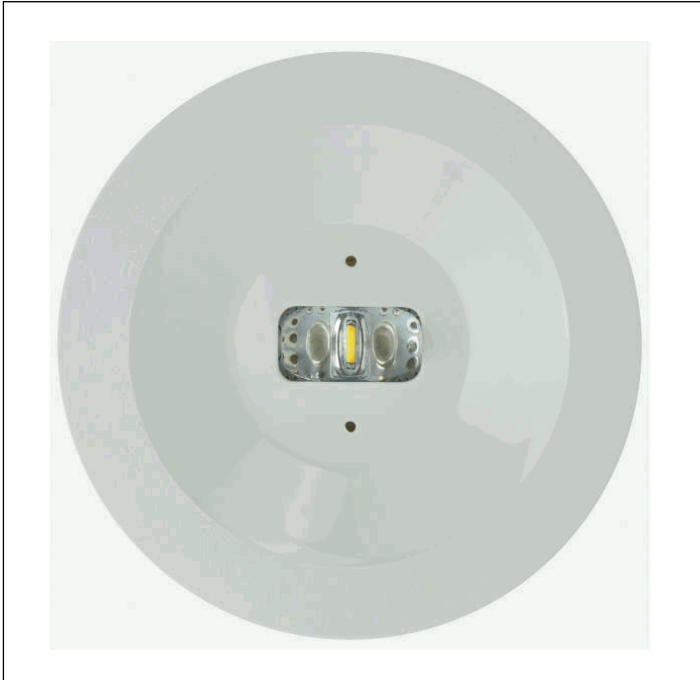
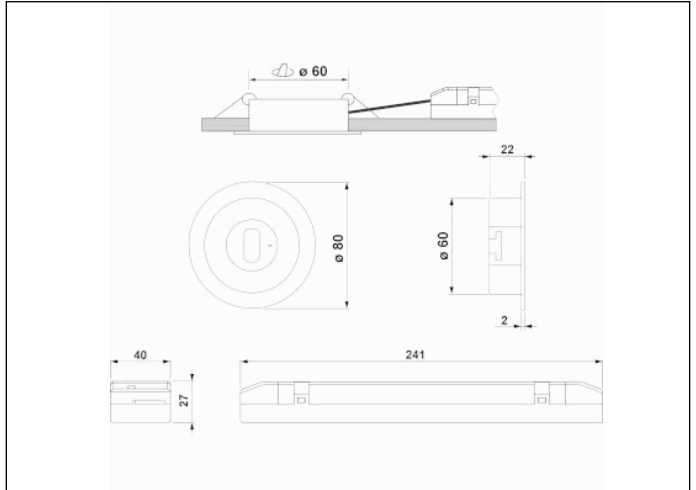


Graphic reference



Dimensions



Control System: DALI

Luminaire: Self-Contained

Standards: EN-60598-1,
EN-60598-2-22, EN 61347-2-7,
EN 61347-2-13, EN 62386

Certification: CE



Electrical characteristics

Supply: 230V 50Hz<1.0.W

Maintained mode consumption: 2.5 W

Non-maintained mode consumption: 1 W

Working temperature: 0-40°C

Emergency lamp: 1 x LED 3W

Emergency lumen output: 165 lm

Maintained lumen output: - lm

Battery: 3.2V-1.8Ah LFP

Class: II

Mode: NM

Power factor: - %

Signaling Luminaire: -

LED temperature: 4000°K

Duration: 3 h

Remote control: Yes

Charging time: 12 h

Mechanical characteristics

Envelope: Polycarbonate

Diffuser: Escape Lens

Suitable for flammable surfaces: Yes

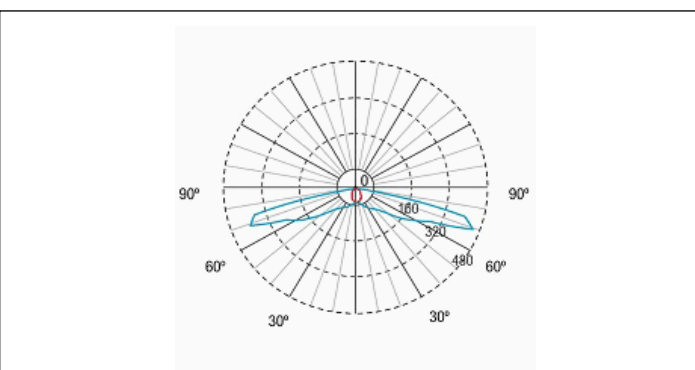
ATEX Envelope:

IP/IK: IP42/IK04

Finish: White RAL9003

Weight: 0,37KG

Photometric curve



Interdistance

Installation height



2,0 m	5,91 m	17,48 m
2,5 m	6,19 m	20,17 m
3,0 m	6,37 m	22,57 m
3,5 m	6,51 m	23,91 m

Installation characteristics

Maintained luminaires use 3 mains supply inputs (L, L1, N) to enable / disable the maintained mode.
Luminaires made up of a spotlight + electrical equipment with batteries (autonomous luminaires), or without batteries (centralized luminaires)
Possibility of installation in:
 Recessed ceiling.
Ceiling fixing by 2 springs.

Operating characteristics

Bus available for DALI communication.
The luminaire has a status LED, which indicates:
 Green LED: OK
 Yellow LED flashing: Battery charging or battery connection failure.
 LED off: Emergency operation failure or mains failure or defective LED or defective unit.

General Envelope data

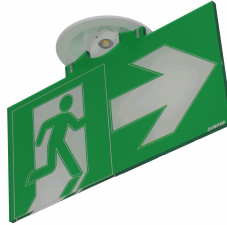
Accessories

ABX0041



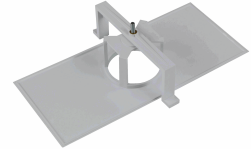
KIT SPAZIO BUILT-IN FLAG WITHOUT
SERIGRAPHING

ABR1741



ACC. PANEL REC. SPAZIO R WHITE
SERIG. RIGHT/LEFT ARROW

AMU8002



ACC. FRAME REC. SPAZIO WHITE
UNIVERSAL