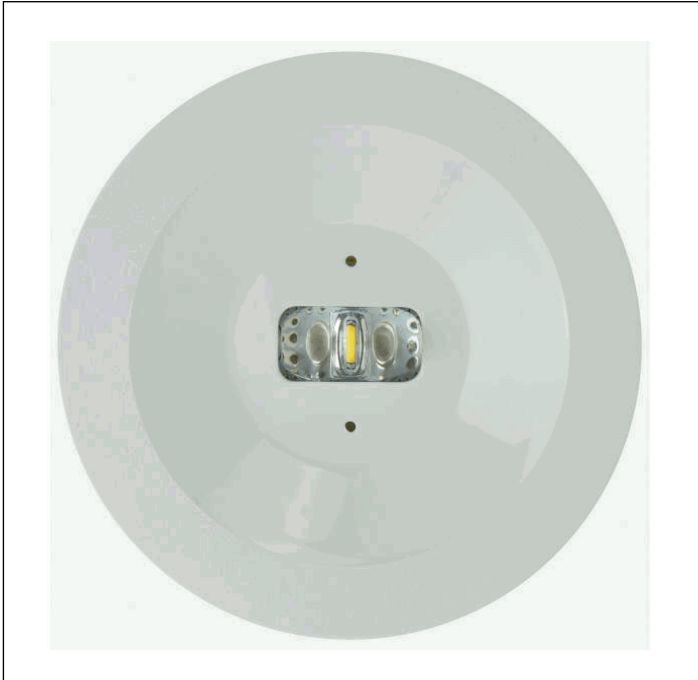
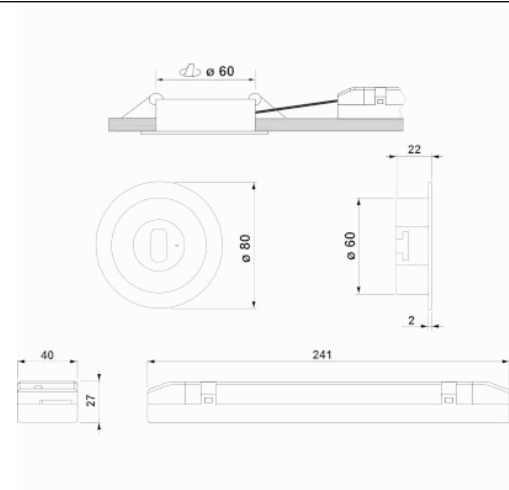


Graphic reference



Dimensions



Control System: AutoTest
Centralized Wireless

Luminaire: Self-Contained

Standards: EN-60598-1,
EN-60598-2-22, EN-62034,
ETSI EN 301 489-1 V2.2.3 ETSI
EN 301 489-3 V2.1.1

Certification: CE, ENEC,
CIVIL DEFENSE



Electrical characteristics

Supply: 230V 50Hz<2.5W
Maintained mode consumption: 2,5 W
Non-maintained mode consumption: 0,9 W
Working temperature: 0-40°C
Emergency lamp: 1 x LED 3W
Emergency lumen output: 165 lm
Maintained lumen output: 100 lm
Battery: 3.2V-1.8Ah LFP

Class: II
Mode: M/NM
Power factor: - %
Signaling Luminaire: -
LED temperature: 4000°K
Duration: 3 h
Remote control: No
Charging time: 12 h

Mechanical characteristics

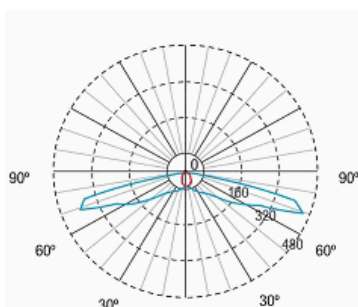
Housing: Polycarbonate
Diffuser: Escape Lens
Suitable for flammable surfaces: Yes

IP/IK: IP42/IK04
Finish: White RAL9003

Weight: 0,25KG

ATEX Envelope:

Photometric curve



Interdistance

Installation height



2,0 m	5,91 m	17,48 m
2,5 m	6,19 m	20,17 m
3,0 m	6,37 m	22,57 m
3,5 m	6,51 m	23,91 m

Installation characteristics

Maintained luminaires use 3 mains supply inputs (L, L1, N) to enable / disable the maintained mode.
Luminaires made up of a spotlight + electrical equipment with batteries (autonomous luminaires), or without batteries (centralized luminaires)
Possibility of installation in:
 Recessed ceiling.
Ceiling fixing by 2 springs.

Operating characteristics

The luminaire has status LEDs, which indicates:
 Status of the battery charging circuit.
 Battery status (duration)
 Emergency status function.
 Test status.
Microprocessor controlled luminaire
The luminaire can be connected to a control unit.
When the luminaire is installed without a control unit, it performs periodic and automatic tests.
 Functional test every 7 days.
 Duration test every 365 days.
The test result is shown in the status indicator LEDs.
Wireless communication that allows: Communication with Control unit by wireless communication with a 868Mhz frequency system.

General Envelope data

Accessories

ABX1741



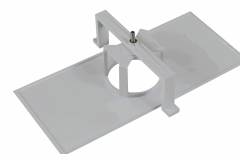
ACC. PANEL REC. SPAZIO SERIG.
RIGHT/LEFT ARROW

ABX1841



ACC. PANEL REC. SPAZIO SERIG. UP
ARROW

AMU8002



ACC. FRAME REC. SPAZIO WHITE
UNIVERSAL

ABX1941



ACC. PANEL REC. SPAZIO SERIG.
DOWN ARROW

AMU8003



ACC. FRAME REC. SPAZIO WHITE
UNIVERSAL BIG HOLE

ABX5441



ACC. PANEL REC. SPAZIO SERIG.
LEFT ARROW SINGLE-SIDED

ABX5541



ACC. PANEL REC. SPAZIO SERIG.
RIGHT ARROW SINGLE-SIDED

ABX5741



ACC. PANEL REC. SPAZIO WHITE
SERIG. DOWN ARROW SINGLE-SIDED

ABX5841



ACC. PANEL REC. SPAZIO SERIG. UP
ARROW SINGLE-SIDED