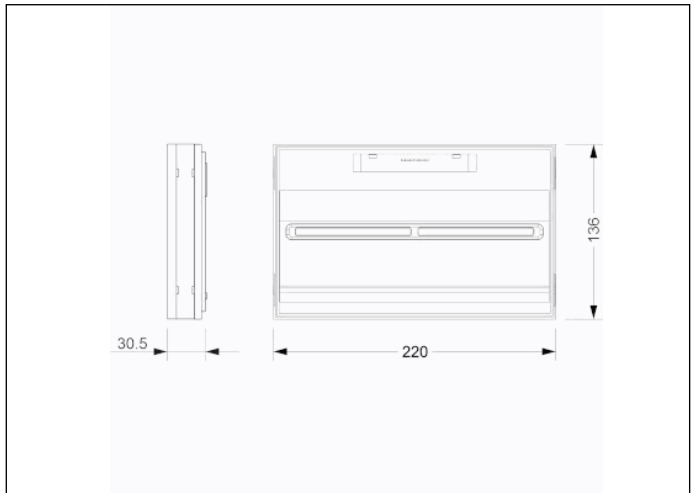


Graphic reference



Dimensions



Control System: AutoTest

Luminaire: Self-Contained

Standards: EN-60598-1,
EN-60598-2-22, EN-62034

Certification: CE

Electrical characteristics

Supply: 230V 50Hz<2.8W

Maintained mode consumption: 2.8 W

Non-maintained mode consumption: 1.0 W

Working temperature: 0-40°C

Emergency lamp: 12 x LEDS 0.5W

Emergency lumen output: 250 lm

Maintained lumen output: 150 lm

Battery: 3.2V-3.0Ah LFP

Class: II

Mode: M/NM

Power factor: - %

Signaling Luminaire: -

LED temperature: 4000°K

Duration: 3 h

Remote control: Yes

Charging time: 12 h

Mechanical characteristics

Envelope: Polycarbonate

Diffuser: Opal Polycarbonate

Suitable for flammable surfaces: Yes

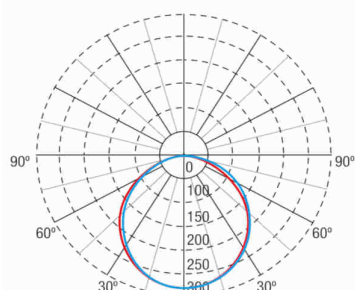
ATEX Envelope:

IP/IK: IP42/IK04

Finish: White RAL9003

Weight: 1,00KG

Photometric curve



Interdistance

**Installation
height**

2,0 m

2,5 m

3,0 m

3,5 m



8,95 m

9,87 m

10,63 m

11,26 m

8,89 m

9,83 m

10,63 m

11,28 m

Installation characteristics

Maintained luminaires have a selector bridge to enable / disable the maintained mode.

Installation with mounting plate.

Possibility of installation in:

- Ceiling/Wall surface.

- Recessed/flushed in ceiling.

- Recessed/flushed in wall.

Possibility of connection with:

- Recessed wiring.

Operating characteristics

The luminaire has status LEDs, which indicates:

- Status of the battery charging circuit.

- Battery status (duration)

- Emergency status function.

- Test status.

Microprocessor controlled luminaire that performs periodic and automatic tests.

- Functional test every 7 days.

- Duration test every 365 days.

The test result is shown in the status indicator LEDs.

Remote control input that allows:

- Put on Standby without power supply.

- Restart in emergency status without power supply.

- Switch on in emergency status (more than 24 h of charge)

- Manual and remote duration test. (more than 24 hours of charge).

- Date and time programming of the tests.

- Reset of the luminaire status.

General Envelope data

Accessories

AMT0081



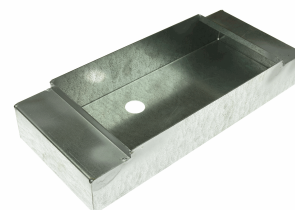
ACC. REC. TOLEDO IP42 WHITE
CEILING

ABX0081



ACC. PANEL REC. TOLEDO IP42
WHITE TRANSP.

AET0081



ACC. REC. TOLEDO METALLIC SHEET
WALL DIM : 336X145X61MM

APT316



ACC. PICTO. TOLEDO UNIVERSAL
PERSON + ARROW

CTLD005



TOLEDO TRANSPARENT PC
DIFFUSER

ABT0081



ACC. PANEL SURF. TOLEDO IP42
WHITE WITHOUT SERIG.

ABT0181



CJTO. SOPORTE SUPERFICIE +
BANDEROLA SERIGR. TOLEDO IP42
'SALIDA'